



Epson Discproducer.

The disc publishers and printers
that do it all.

Discproducer™



"Duplicating discs has never
been so easy" Dashboard

"Very economical
to operate"

Video Transfer

"Operates flawlessly" Sci-Tech Today

"The ideal system" EventDV

"Awesome
product" Videography Resource



"The best disc duplicator" Computer Doc

"Perfectly
engineered
solution" CD Writer

"The best looking on-disc images
I've ever seen" ifwm.com

"A heavyweight in
in-house DVD duplication"

Adobe Layers Magazine

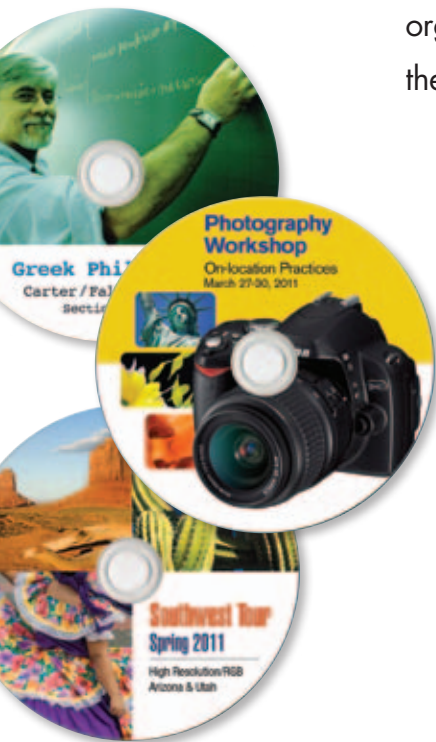
"Now I'm my own replication house"

Vincent Versace, Photographer

Epson's Discproducer Family of Disc Publishing and Printing Solutions

The right choice for professional CD/DVD publishing and printing

Epson's Discproducer products are ideal for a wide range of businesses from service bureaus, educational institutions and photographers to government and medical organizations. Built with Epson's world-renowned robotic and printing technologies, they are known for their high quality, reliability and low total cost of ownership.



DISCPRODUCER FEATURES

- Unattended production of up to 100 discs
- Highest quality printing in its class
- Print speeds up to 95 discs/hour
- Six high-capacity ink cartridges, each with low ink sensors
- Economical to operate and maintain
- USB or network connectivity
- Compact rugged construction for top reliability
- Backed by Epson's industry-leading service programs

Discproducer Standard Models

The Discproducer comes in two Standard models: the Discproducer 100 and the Discproducer 50.

Epson Discproducer 100 Model

The Discproducer Standard 100 is the advanced desktop publisher you can rely on with its high performance, fast throughput and top reliability. It is designed for unattended operation and can burn and print up to 100 discs at a speed of up to 30 CDs or 15 DVDs per hour. And it comes with easy-to-use Total Disc Maker software with label design and publishing functions all in one package.

Best-in-class printing

It features a built-in inkjet printer with Epson's patented MicroPiezo® technology. Using six colors, it delivers the highest print quality in its class with crisp text and vibrant graphics. And it offers high-capacity cartridges and individual LEDs for each ink cartridge to alert you when the ink level is low.

Advanced robotics

Discproducer's robotic arm with patented AcuGrip™ technology ensures that only one disc is placed in the drive or printer at a time, eliminating dual feeding that can damage the drives and interrupt unsupervised production runs.

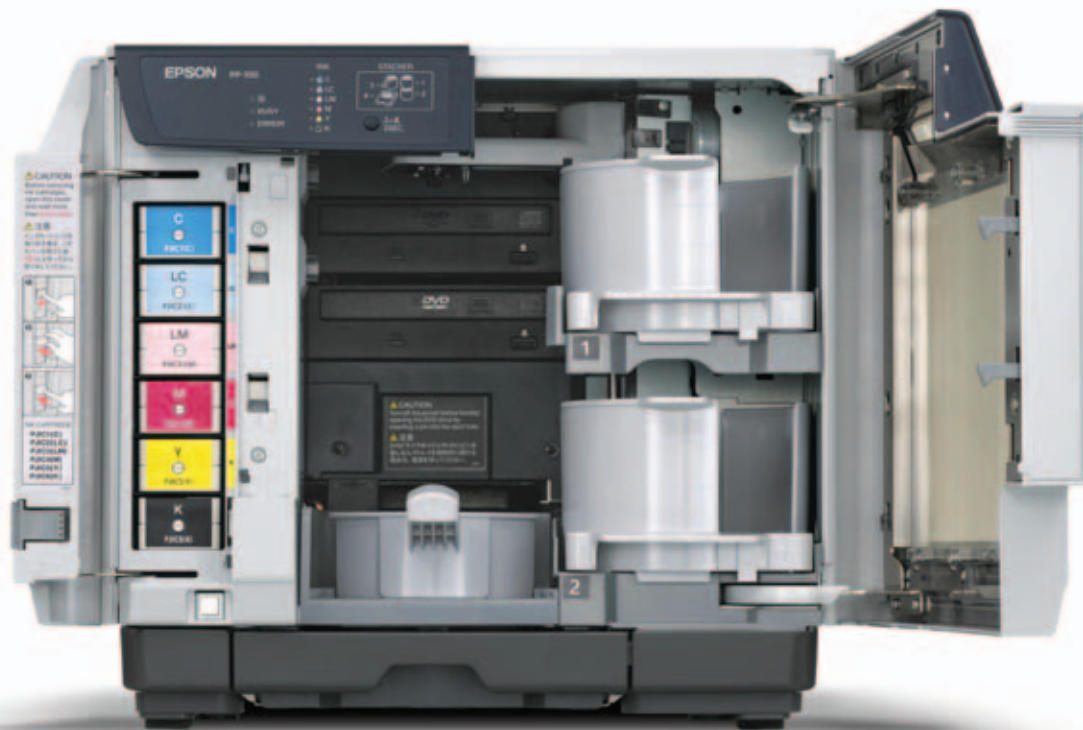
Three operating modes

Epson's Discproducer Standard 100 has three unique operating modes for you to choose from: batch mode for larger runs of up to 100 discs, standard mode for smaller production runs up to 50 discs and an external mode for up to 5 discs with mixed media support.

Epson Discproducer 50 Model

Epson's Discproducer Standard 50 model was designed for users with smaller output requirements. It has all the same features of the Standard 100 model, but with a smaller capacity. It can burn and print up to 50 discs at a speed of 15 CDs or 8 DVDs per hour and features two operating modes instead of three: a standard mode for production runs up to 50 discs and a low volume mode for runs up to 20 discs.





The Discproducer is the only disc publisher in its class to offer individual ink level sensors, AcuGrip technology, status readings on all functions and total front access. (The Standard 100 model is shown.)

Discproducer Network Model

Epson's Discproducer Network model offers the same great features as the Standard 100 model. It is also designed for unattended operation and can publish up to 100 discs without the need to



reload. It supports shared access between multiple users with Ethernet connectivity and no software licensing fees required. Just connect the Discproducer to your network and load the Total Disc Maker software onto each user's computer.

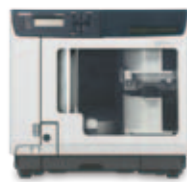
Additional features

The Discproducer network publisher features a two-line LCD display for conveying ink levels, publisher status and error reporting information. It also has an embedded hard drive for storing jobs and an embedded processor to manage and expedite publishing jobs. In addition, it offers a lock to protect against unauthorized access.

Software for administrators

There is a special software tool for the Discproducer network models, Total Disc Net Administration. This tool is used to set up and manage the Discproducer for network disc publishing operations.

Discproducer Network Security Model



Epson's Discproducer Network Security model offers the same features as the network model. In addition,

there are two special security mode settings that allow the administrator to protect confidential or sensitive information. Up to 50 discs can be published in either mode.

PIN controlled access mode

In PIN mode users are required to enter a unique user ID and PIN number in order to remove completed jobs from Discproducer. The user will only be allowed to remove their specific discs.

Security access mode

In Security mode, users require approval prior to publishing any jobs. Jobs are automatically submitted to an autho-



rized administrator and once jobs are approved, they are released to the disc

publisher. After a job is completed, the user is required to enter a unique user ID and PIN number to remove completed jobs from Discproducer. And in the security mode, the user will only be allowed to remove their own discs.

Additional security features

The Epson Discproducer Network Security model offers an extremely high level of security for its users. It also features an encrypted hard drive to further protect sensitive or confidential information and allows administrators to restrict publishing to authorized users only.

Discproducer Autoprinter Model

The Discproducer Autoprinter is ideal for use by businesses that already have high-speed duplication systems in place. It has all the features you need to print up to 100 discs at a time at a fast print speed of up to 95 discs per hour.



It uses the same advanced MicroPiezo inkjet printer as the Discproducer publishers and with its

vibrant six-color inkjet printing, precision AcuGrip technology and easy-to-use software you get the high-quality results you're looking for every time.

Low cost of ownership

Featuring Epson's famous quality and advanced technology, the Autoprinter offers a low total cost of ownership. With its industry-leading high quality printer and robotic arm, it has an extended life of up to five years or up to 300,000 discs with regular maintenance.

Epson Technology

Epson is known worldwide for its advanced robotics and printing technologies and the high reliability of its products. The Discproducer is no exception. Its compact design, coupled with its dust-proof body, outstanding print quality and patented AcuGrip technology deliver precision performance, professional-looking discs, superb reliability and amazingly low operating costs.



AcuGrip technology ensures single feed of media

Unlike other disc publishers, the Epson Discproducer robotic arm features patented AcuGrip technology which ensures that only one disc is placed in the drive or printer even if two are stuck together. This technology not only increases the life of the product, but also helps protect against the interruption of unattended production runs due to mechanical blockage.



MicroPiezo technology is core to Epson print quality

MicroPiezo print heads are at the heart of every Epson inkjet printer. MicroPiezo technology ensures uniform, stable ink droplets with virtually no satellites or



misting. That's why Discproducer delivers the highest print quality in its class for crisp text and vibrant graphics at up to 1440 x 1440 dpi resolution. And its independent, high-capacity ink cartridges make printing extremely cost-effective with an estimated average cost of \$.08 per disc.¹

Easy-to-use Software

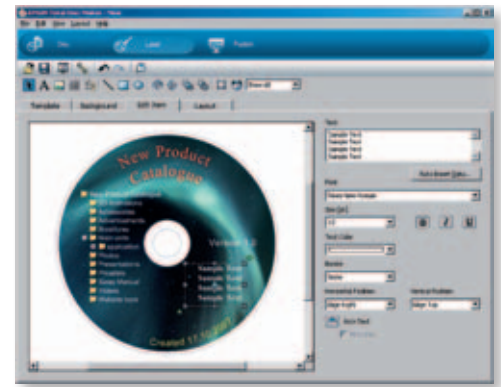
Discproducer models come with the software and tools you need to burn and print discs.² Total Disc Maker includes disc editing, label editing and publishing functions. All it takes is a few easy steps.

1. Select Data Simply select the media format, then drag, drop and burn.

2. Design the Label Use your own design or one of the pre-defined templates and images provided. The preview display allows you to check your composition and save your work for easy retrieval.

3. Configure Production The software leads you through the process of setting up parameters for the number of discs, burning and print speeds, input and output tray selection and print resolution. Then click "Publish" to start production.

4. Monitor Production Epson's Total Disc Monitor software keeps you informed on the state of important functions as well as any current and pending jobs.



Optional Developer Tools

Optional Total Disc Bridge software allows integrators and developers to use their in-house software applications with the Discproducer.

Industry-leading Service

When you choose Epson, you get the world-class service you'd expect from a leader. Our ExpressCareSM Service



Program offers cost-effective service options including ExtendedCareSM that extends your initial warranty coverage for multiple years, and Spare-In-The-Air[®] for overnight product replacement.

Find Out More Today

To learn more about Epson's Discproducer desktop disc publishing solutions, go to discproducer.epson.com.

¹For more information go to <http://discproducer.epson.com/discproducer/inkcost/index.html>.

²Burning not available with Autoprinter model.

Epson Discproducer Specifications



AcuGrip™

Publishing Speed	Standard 50 Standard 100/Network	CD up to 15 discs/hour. DVD up to 8 discs/hour CD up to 30 discs/hour. DVD up to 15 discs/hour
Publishing Modes	Standard 50 Standard 100/Network	Low volume mode up to 20 CDs/DVDs unattended. Standard mode up to 50 CDs/DVDs unattended ¹ Standard mode up to 50 CDs/DVDs unattended. Batch mode up to 100 CDs/DVDs unattended ¹ External output up to 5 CDs/DVDs, output accessed through front tray ¹ PIN/Security mode up to 50 CDs/DVDs unattended (Network Security model only)
Print Specifications	All Standard/Network models Autoprinter	Speed mode up to 60 discs/hour at 1440 x 720 dpi Quality mode up to 40 discs/hour at 1440 x 1440 dpi Speed mode up to 95 discs/hour at 720 x 720 dpi. Regular mode up to 75 discs hour at 1440 x 720 dpi Quality mode up to 50 discs/hour at 1440 x 1440 dpi
Ink Pad	Ink pad life ²	Approximately 30,000 discs
Ink Cartridge	Ink type Colors Yield ³	Dye ink. Cyan, magenta, yellow, light cyan, light magenta, black 1000 discs or more
CD/DVD Drives	All Standard/Network models	Standard 50: 1 drive. Standard 100/Network: 2 drives (Autoprinter has no drives)
Writing Speed	All Standard/Network models	CD: maximum 40x. DVD-R, DVD+R: maximum 12x. DVD-R DL, DVD+R DL: maximum 8x
Supported Media	Size Type Surface	Only standard 120mm discs CD-R, DVD±R, DVD±R DL Inkjet printable
External Dimensions	Standard 50 Standard 100/Autoprinter Network model	Width 14.84 inches, Depth 18.31 inches, Height 12.76 inches excluding AC/USB cables Width 14.84 inches, Depth 18.30 inches, Height 13.70 inches excluding AC/USB cables Width 14.80 inches, Depth 20.20 inches, Height 13.70 inches excluding AC cable
Weight	Standard 50 Standard 100 Network model Autoprinter model	Approximately 46.2 lbs, including stackers and ink cartridges, excluding AC cable/discs Approximately 52.9 lbs, including stackers and ink cartridges, excluding AC cable/discs Approximately 55.1 lbs, including stackers and ink cartridges, excluding AC cable/discs Approximately 48 lbs, including stackers and ink cartridges, excluding AC cable/discs
Software	All models	Total Disc Maker (Network models also include Total Disc Net Administrator Tool)
Computer Requirements	All models	OS: Windows 7, Vista SP1 or later; XP SP2 or later; 2000 SP4 or later; Server 2008 R2; Server 2008 SP2 or later; and Server 2003/2003 R2 SP2 or later (Windows XP and Server 2003/2003 R2 32 bit only) CPU: Pentium 4, 1.4 GHz or higher (2.0 GHz Windows Server 2008) Memory: 2 GB or larger (1 GB Vista) HDD capacity: 30 GB or larger (50 GB Windows Server 2008), 7200 rpm or more Graphic environment: XGA or more, 65,536 colors or more
Interface	Network model Network Security model Standard 50 Standard 100 Autoprinter model Network model	Includes embedded processor and hard drive Includes embedded processor and encrypted hard drive USB 2.0 (High-speed) USB 2.0 (High-speed) USB 2.0 (High-speed) Ethernet, 100 Base Tx, 1000 Base T
Warranty	All models	1 year limited warranty standard (additional extended service options available)

¹ Excludes Network Security model.

² The printer's ink pad is estimated to become saturated and need replacing after about 30,000 discs. Based on printing 2000 discs per month, bi-directional. Actual results will vary based on such factors as images printed, print settings, media type, frequency of use and temperature. Ink pad is end-user replaceable on Autoprinter model only.

³ Actual cartridge yields may be lower with high-density images, hot or dusty conditions, less frequent printing, or printing predominantly with one color. All ink colors are used for printing and printer maintenance, and all colors have to be installed for printing. For print quality, part of the ink from the included cartridges is used for printer startup and a variable amount of ink remains in the cartridges after the "replace cartridge" signal.

Legacy Technology Services

We Rent & Sell All Types Of Barcode Equipment

Call now to talk to an expert

866-271-9891

www.LegacyGlobal.com

Some brands we carry



MOTOROLA

Intermec

DATALOGIC™

Honeywell

EQUINOX
PAYMENTS



About us

- Legacy Technology Services is a leading nationwide provider of mobile computing, barcode, printers and point of sale equipment and services.
- For over a decade, thousands of clients across North America have trusted us to provide equipment from leading manufacturers backed by the services to support them.

Latest Hardware from top manufacturers

- Legacy handles virtually every major manufacturer of mobile computing, barcoding and point of sale equipment.

Expert Repair and Maintenance services

- Legacy is one of the best repair facilities in North America

Discontinued product sourcing

- They don't make it anymore? Our inventory also includes manufacturer close-outs and discontinued equipment to support our clients legacy infrastructure.

Trade-in and Disposal services

- That old equipment laying around your facility may still have some value. Legacy routinely purchases equipment from our clients around the globe.
 - Data destruction
 - Hardware disposal
 - Auditing services

Dedicated client account team

- Dedicated, highly trained account managers are here to answer all your questions and provide top notch service.

Equipment rental services

- Sometimes renting is a better solution, Legacy's huge rental inventory provides the equipment you need for temporary needs and projects.



Legacy, Inc.

160 West Road,
Ellington, CT 06029

Toll Free: 866-271-9891

Fax: 888-522-4684